

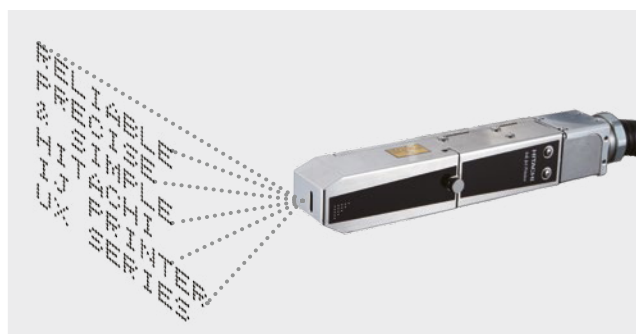
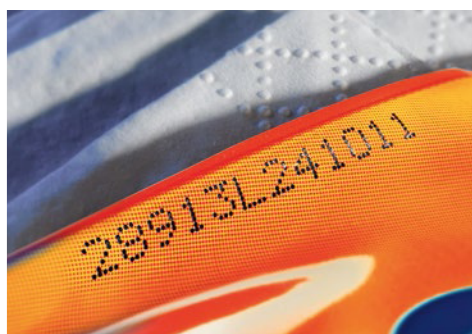
Inkjet tiskalnik
UX Serije



HITACHI
Inspire the Next

Nove tehnološke izboljšave

- Enostavni kartušni sistem za črnilo
- Znatno zmanjšana poraba make up-a
- 6-linijsko tiskanje
- Standardno IP65



Označevanje izdelkov in embalaže.

Splošne značilnosti

Hitachi Series	UX-B160W	UX-D160W	UX-E160W	
Nozzle size	65 µm			
Max. print line number	Up to 3 lines	Up to 6 lines	Up to 6 lines	
Maximum number of print characters	Up to 240 characters	Up to 240 characters (Option: Up to 1,000 characters)	Up to 1,000 characters	
Font (Horizontal × Vertical)	4 × 5	-	✓	
	5 × 5	✓	✓	
	5 × 7(8), 9 × 7(8)	✓	✓	
	7 × 10	✓	✓	
	11 × 11	✓ (Chinese only)	✓ (Chinese only)	✓ (Chinese only)
	10 × 12	✓	✓	✓
	12 × 16	✓	✓	✓
	18 × 24	✓	✓	✓
	24 × 32	-	✓	✓
	30 × 40	-	✓	✓
36 × 48	-	✓	✓	
Character height	2–10mm			
Display & input device	WYSIWYG design; display: TFT LCD (10.4" color), backlight provided; input device: Touch panel, input sound provided			
Screen language (2 languages selectable)	English, Chinese, Korean, Thai, Vietnamese, German, French, Dutch, Italian, Spanish, Portuguese, Swedish, Danish, Greek, Russian, Czech, Polish, Arabic, Serbian, Turkish, Hungarian, Bulgarian, Catalan, Romanian, Finnish, Norwegian, Slovenian			
Maximum print rate (characters per second) (Font 5 × 5, space 1, 1 line)	Up to 1,148	Up to 1,148 (Option: Up to 2,296)	Up to 2,296	
Standard characters	Alphanumeric (A–Z, a–z, 0–9), symbols (27) and space: Total 90			
User pattern	50 patterns each for dot matrix	200 patterns each for dot matrix		
Print functions	Calendar, Count, Font mixture, Password			
Barcode printing	-	code39, ITF, NW-7, EAN-13, EAN-8, UPC-A, UPC-E, code128/EAN-128, GS-1 DataBar		
2D code printing	-	Data Matrix (Alphabet: 49 characters/Numerals: 98 characters), QR, Micro QR code		
Message storage capacity	150 Messages	300 Messages (Option: Up to 2,000 messages (depends on data content))	2,000 Messages (depends on data content)	
Input signal	Print target detection Rotary encoder pulse (NPN/PNP Selectable)	Print target detection, Printing stop, Rotary encoder pulse, Reciprocal printing, Remote control (Run, Stop, High-voltage ON/OFF, Reset), (NPN/ PNP Selectable)		
Output signal	Print ready, Fault, Warning (NPN Only)	Print in progress or Print complete, Online (NPN/ PNP Selectable), Print ready, Fault, Warning (NPN Only)		
Data interface	Option (RS-232C at baud rates selectable up to 115,200 bps)	RS-232C at baud rates selectable up to 115,200 bps		
Ethernet (Modbus communication)	-	IEEE802.3, 100BASE-T		
External memory	USB for user data storage			
Printhead cable length/angle	4 m (in-line/90 degrees)			
Operating temperature range	0–50 °C (1067 K Ink)			
Operating humidity range	30–90% RH (no condensation)			
Power supply (Automatic voltage selection)	AC100–120/220–240V ± 10% 50/60Hz 120VA			
Approval	CE, UL, cUL, C-Tick, FCC, ICES		CE, C-Tick	
Dimensions (Width × Depth × Height)	400 × 320 × 527 mm			
International protection (Cabinet)	IP 55	IP 65		
Approximate weight	27 kg			

Please follow us:



More information about
Hitachi Coding & Marking products:
www.hitachi-industrial.eu

Hitachi Europe GmbH, Am Seestern 18, D-40547 Düsseldorf
Phone: +49(0)211-5283-0, Fax: +49(0)211-5283-649
www.hitachi-industrial.eu, info@hitachi-ds.com
© Hitachi Industrial Equipment Systems Co., Ltd., Japan

All company and product names in this brochure are the property of the respective companies.

Prodaja in servis:

TiFT

OZNAČEVANJE IZDELKOV IN EMBALAŽE

Kamniška 41, SI - 1000 Ljubljana
T: 01 600 10 20, M: 051 686 747
E: info@tift.si, W: www.tift.si/koding